

EXPLORING INFLUENCES

THIS GUIDE EXPLORES
WHY WE LOOK AT
ARTWORK FOR
INSPIRATION WHEN
DEVELOPING IDEAS FOR
OUR OWN ARTWORK.

WHAT IS CONTEXT?

All of the things that might have influenced the making of an artwork.

- When the work was made;
- Where it was made (culturally or geographically);
- Why it was made.

DEVELOPING ARTWORK

Artists & Designers are often inspired by a wide range of historical, contemporary, social and cultural sources, as well as other Art Practitioners.

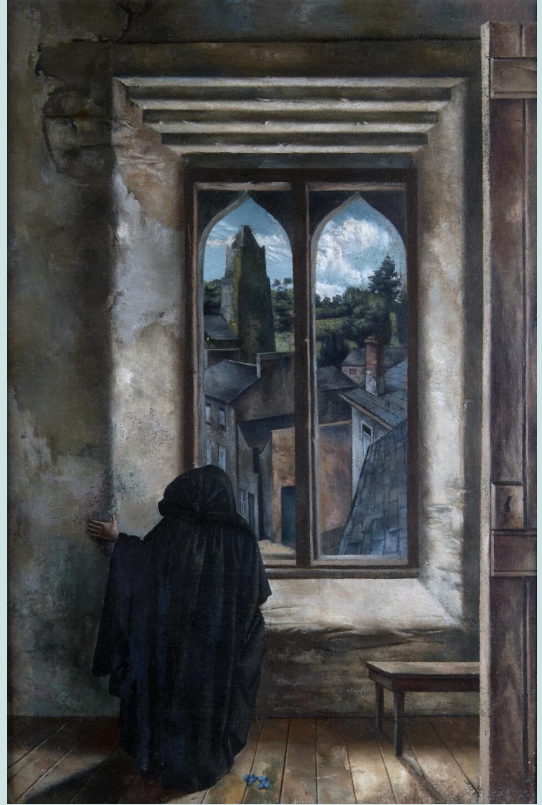
WHY DEVELOP CONTEXT?

- Supports and enriches content of your work.
- Helps understanding of how themes/ideas are approached.
- Exploration of materials, techniques and processes.

THESE ARTWORKS FROM THE CRAWFORD ART GALLERY COLLECTION MAY BE SEEN TO EXPRESS THE THEME OF TIME AND PLACE. EACH ARTWORK CAN BE SEEN TO DEPICT A VIEW, PERHAPS FROM A WINDOW. THINK ABOUT THE MEANING EACH ARTIST IS COMMUNICATING. HOW IS THIS COMMUNICATED?



CAG. 118, Brenda Andrews, Window, 1981,



CAG. 56, Patrick Hennessy, RHA,
Old Kinsale, c. 1940



CAG. 125, Alicia Boyle, St. Finbarre



CAG. 2029, Cormac O' Leary,
City Nocturne, 2002

EXPLORING YOUR THEME

Study the artworks from the Crawford Art Gallery.

Ideally, come and see the artwork, but you can also look at the 'Collection' section of the website.

**MAKE A SERIES OF STUDIES
FROM YOUR CHOSEN
ARTWORKS THAT EXPRESS
YOUR IDEAS. EXPLORE MEDIA
TO GIVE MEANING TO YOUR
ARTWORK.**

**THE ADDITION OF PIECES
OF MAPS IN THE SKY
IS TO ADD MEANING.
WHAT DOES IT SAY TO YOU?**

**THE SHORT TIMELAPSE
LOOKS AT A WAY OF
CAPTURING YOUR
THOUGHTS ON PAPER.
IDEAL FOR WORK IN A
SKETCHBOOK.**

**IT IS A STUDY OF
THE ARTWORK BELOW
BY A.M. O' HARE.**

**THE TIMELAPSE STUDY
USES PAPER (MAGAZINES,
PACKAGING) FROM
INDOORS TO EXPRESS
THE OUTDOORS.**



CAG. 386, A.M. O' Hare, Houses in Cork, with View of Shandon, 20th century.